

SALE & SERVICES IN USA



371, HOES LANE , SUITE 200,
PISCATAWAY,
NEW JERSEY 08854, USA.

 +1 267 392-9687

 muthu@safvolt.com

 www.safvoltusa.com



ISO 9001-2015 COMPANY



Tested at
NABL
Accredited labs



FILE NO: E539332

UL 891 EV CHARGING POWER DISTRIBUTION UNIT (PDU)

for more information on our products
Visit www.safvoltusa.com

FOR PRODUCT DEMONSTRATION VISIT OUR
SHOWROOM AT :

SAFVOLT AMERICA LLC

371, HOES LANE , SUITE
200, PISCATAWAY,
NEW JERSEY 08854, USA.



**INNOVATION & TECHNOLOGY
MANUFACTURER**



200-4000 Amps

EV2 PDU

200-4000 Amps

EV 2 PDU's are designed around Level 2 charging up to 30KW. Features for these cabinets include:

- UL 891 Compliance.
- 200 A To 2000 A main breakers.
- 40 A to 100 A branch breaker options.
- Voltage of
- All-in-one cabinet containing power distribution equipment and metering equipment, creating a smaller footprint for your project.

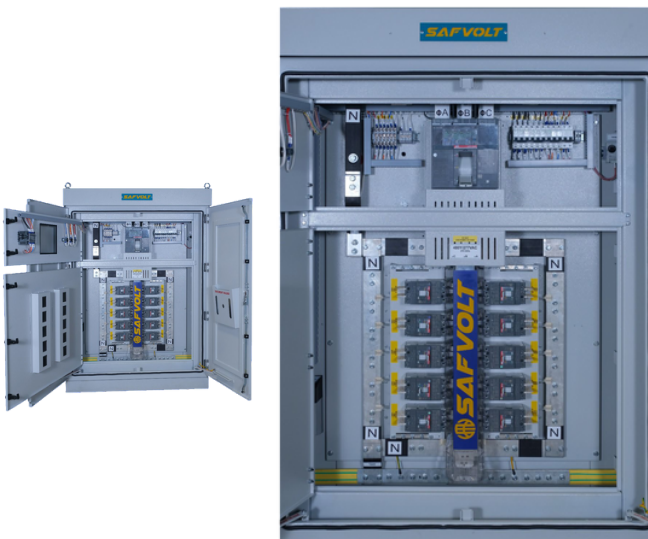


EV3 PDU

400-4000 Amps

EV 3 PDU's cover all your Level 3 charging needs from 40kW to 360kW. The features of these PDU's are :

- UL 891 Compliance
- 400A to 4000A main Breakers
- 100A to 800A branch Breaker options
- Voltage of 208/415/480 options
- NEMA 3/NEMA 3R/NEMA 12 options
- Optional control power transformer for ancillary power supply



GENERAL PURPOSE PDU

200-4000 Amps

Our General Purpose PDU's can include optional built in

VPI transformer for auxiliary Load. For sites that require a secondary voltage our transformer up to 150. KVA can be used, eliminating the need for multiple cabinets .

- UL 508/UL 891 options*
- NEMA 3/NEMA 3R/NEMA 12 options

Our General Purpose PDU's are available with various breaker options

